



**SETTING THE
NEW STANDARD
IN WHEELCHAIR
CUSHIONING**

The nexus SPIRIT Cushion is unlike any ROHO Cushion you've ever seen before. It combines the stability of a contoured foam base with the therapeutic care for which ROHO® DRY FLOATATION® cushions are known. The contoured foam base is designed to allow for increased stability for transfers and provides exceptional positioning of the pelvis and lower extremities for enhanced sitting posture. The ROHO Cushion, positioned to address critical pressure points, provides you the highest level of skin protection from the originators of ROHO DRY FLOATATION Technology. Life is full of challenges, sitting shouldn't be one of them.

NEW! THE ROHO NEXUS® SPIRIT™ CUSHION

NEXUS[®] SPIRIT[™] CUSHION

SKIN PROTECTION.

The nexus SPIRIT provides protection to the ischia, sacrum and coccyx area through the placement of a ROHO DRY FLOATATION support pad. Unparalleled in performance, the ROHO Cushion provides an adjustable, low friction/low shear environment that can protect the user against wounds.

STABILITY.

The contoured foam base provides increased stability for transfers in and out of the cushion.

ENHANCED SITTING POSTURE.

The contoured foam is designed to provide improved positioning of the pelvis and lower extremities, enhancing sitting posture.



FEATURES & BENEFITS

- LIGHTWEIGHT:** Easy to handle and carry, at just 3 lbs./1.4 kg.
- WASHABLE:** DRY FLOATATION support pad may be cleaned with soap and water. Foam base may be wiped down. Fluid resistant cover is machine washable.
- REPAIRABLE:** Neoprene rubber support pad can be patched to extend use or sent to ROHO for any necessary repair.

SPECIFICATIONS

- INCLUDES:** nexus SPIRIT cushion, two-way stretch cover, hand inflation pump, repair kit, and operating instructions.
- CONSTRUCTION:** Flame resistant neoprene rubber support pad, flame resistant polyurethane seating foam
- SIZES:** Available to fit chairs 16" x 16" / 41 cm x 41 cm, 16" x 18" / 41 cm x 48 cm, 17" x 17" / 43 cm x 43 cm, 18" x 16" / 48 cm x 41 cm, 18" x 18" / 48 cm x 48 cm and 20" x 18" / 51 cm x 46 cm
- WARRANTY:** 24-month limited

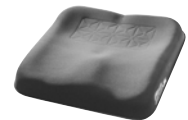
APPLICATIONS

- The nexus SPIRIT Cushion is most effective for users:
- who are at moderate risk for skin breakdown
 - who have chronic pain complaints
 - who require increased stability for transfers
 - who have difficulty with lower extremity positioning
 - who are able to perform independent weight shifts

MORE PRODUCTS FROM THE ROHO GROUP



QUADTRO[®] SELECT[™] Cushion



AirLITE[®] Cushion



PRODIGY Mattress Overlay[®]



MOSAIC[®] Cushion



100 North Florida Avenue • Belleville, IL 62221-5429 • USA • www.therohogroup.com
U.S. & Canada: 1-800-851-3449 • 1-618-277-9173 • fax 1-888-551-3449
Outside the U.S. & Canada • 1-618-277-9150 • fax 1-618-277-6518